

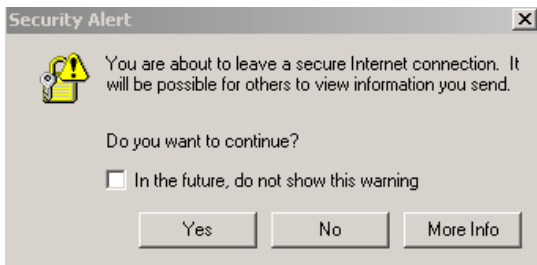
Web3270

ERC users can now access the NS mainframe from links provided on the ERC web site. This functionality is powered by WebConnect, a software product from OpenConnect, Inc. and attempts to address the needs of many ERC users to be able to access the mainframe via the web.

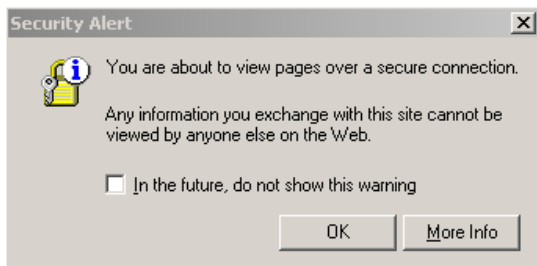
WebConnect works by downloading a Java applet to the users' web browser. The applet looks and works like a mainframe terminal session. Keep in mind that depending on the speed of your connection, it could take several minutes for the applet to download.

Here are some highlights of what may occur when you attempt to access the mainframe using WebConnect for the first time (You may or may not get these depending on how your browser is set up):

- A security alert window will say "You are about to leave a secure connection".
Action: Click "OK".

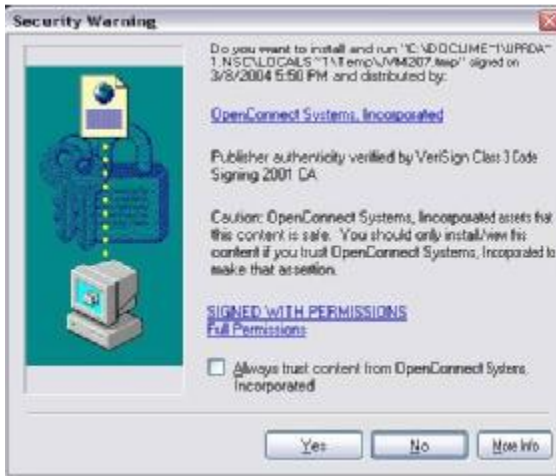


- A security alert window will say "You are about to view pages over a secure connection".
Action: Click "OK".



- A browser will open containing "Checking Java Virtual Machine". You can close this browser later after WebCoonnect has completed launching and the mainframe screen is visible.

- A dialog box like the one below will ask if you want to install and run a Java applet.
Action: Check the box that says “Always trust content from OpenConnect Systems, Incorporated.”
Action: Click on Yes at the bottom of the box.



- The browser with “Checking Java Virtual Machine” will change to “Please wait - loading WebConnect...”. You can close this browser later after WebConnect has completed launching and the mainframe screen is visible.
- A browser box like the one below will open at the lower right hand corner of the screen. This is necessary for the operation of the application. If you close this box, WebConnect will close also.

